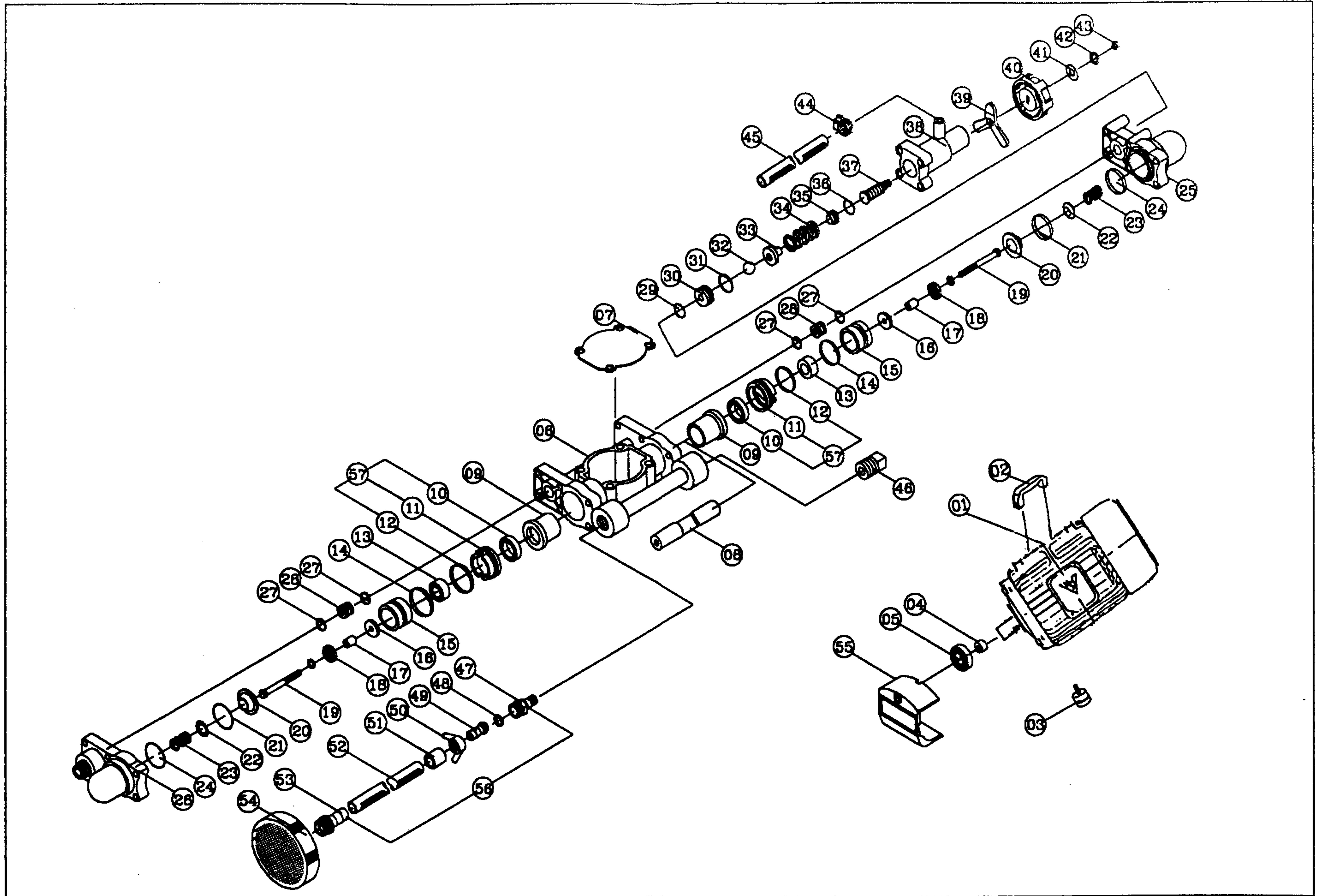


# PARTS DIAGRAM



## 零件編號名稱對照表

## PARTS LIST

ITEM 序號	PARTS NO. 零件編	零件名	PARTS NAME	Q'TY 用量	ITEM 序號	PARTS NO. 零件編	零件名	PARTS NAME	Q'TY 用量
01	906-001	3/4HP馬達	3/4 HP Motor	1	29	959-077	油封條10x3	O-Ring 10x3	1
02	906-003	弓型手把	Handler	1	30	959-059	迴水閥座	Seat, Overflow Valve	1
03	908-002	腳墊	Shake-Proof Washer	4	31	959-058	油封條13x2.5	O-Ring 13x2.5	1
04	959-037A	偏心軸	Shaft, Eccentric	1	32	959-060	3/8不鏽鋼珠	3/8 Stainless Ball	1
05	959-033	軸承	Bearing	1	33	959-061	迴水下塞	Under Metal	1
06	959-046	汽缸室	Cylinder	1	34	959-062	迴水彈簧	Spring	1
07	959-047	防塵蓋	Plunger Cover	1	35	959-063	迴水上塞	Upper Metal	1
08	959-052	柱塞	Plunger	1	36	959-064	油封條9x2	O-Ring 9x2	1
09	959-4960	含油軸承固定座	Bush Plunger	2	37	959-065	調壓螺絲	Regulating Screw	1
10	959-092	水封16x24x6	Water Seal	2	38	959-057	迴水座	Overflow Body	1
11	959-095	水封座	Seat, Water Seal	2	39	959-067	調壓固定片	Fly Nut	1
12	959-096	油封條24.5x2	O-Ring 24.5x2	2	40	959-066	調壓盤	Adjusting Pan	1
13	959-093	活塞	Water Seal	2	41	LU-0903702	M6x16邊白鐵華司	M6x16 Washer	1
14	959-040	油封條22x2	O-Ring 22x2	2	42	LU-0908200	M6彈簧華司	M6 Spring, Washer	1
15	959-051	汽缸套	Cylinder Bushing	2	43	LU-0908800	M6白鐵螺母	M6 Nut	1
16	959-087	水封固定片	Water Seal Box	2	44	926-024A	5/8管束	5/8 Clamp, Hose	1
17	959-045	螺絲套管	Tube, Screw Bush	2	45	959-024	迴水水管	Overflow Hose	1
18	959-088	水封固定片(有孔)	Water Seal Box(hole)	2	46	959-054	進水塞頭	Plug, Hole	1
19	LU-0910104	M5x30L白鐵螺絲	M5x30L Screw	2	47	959-053A	進水接頭	Joint	1
20	959-041	活門上塞	Valve Seat	2	48	22-080	四方迫緊	Packing	1
21	959-040	油封條22x2	O-Ring 22x2	2	49	22-081	申木	Core Coupling	1
22	959-042	活門下塞	Stopper	2	50	22-082	蝶螺帽	Wing Nut	1
23	959-044	活門彈簧	Spring Valve	2	51	22-084	管束	Brass Cup	1
24	959-094	油封條30x2.5	O-Ring 30x2.5	2	53	906-095	申木	Core Strainer	1
25	959-049	迴水壓力室	Overflow Metal	1	54	22-096	吸水網頭	Strainer Assy	1
26	959-050	出水壓力室	Discharge Metal	1	55	906-002	馬達蓋	Cover, Motor	1
27	959-076	油封條8x2	O-Ring 8x2	4	56	22-4119	四分吸水管組(8尺)	Overflow Hose Assy	1
28	959-056	高壓銅管	High Pressure Joint	2	57	959-4950	水封座組	Water Seal Seat Assy	2