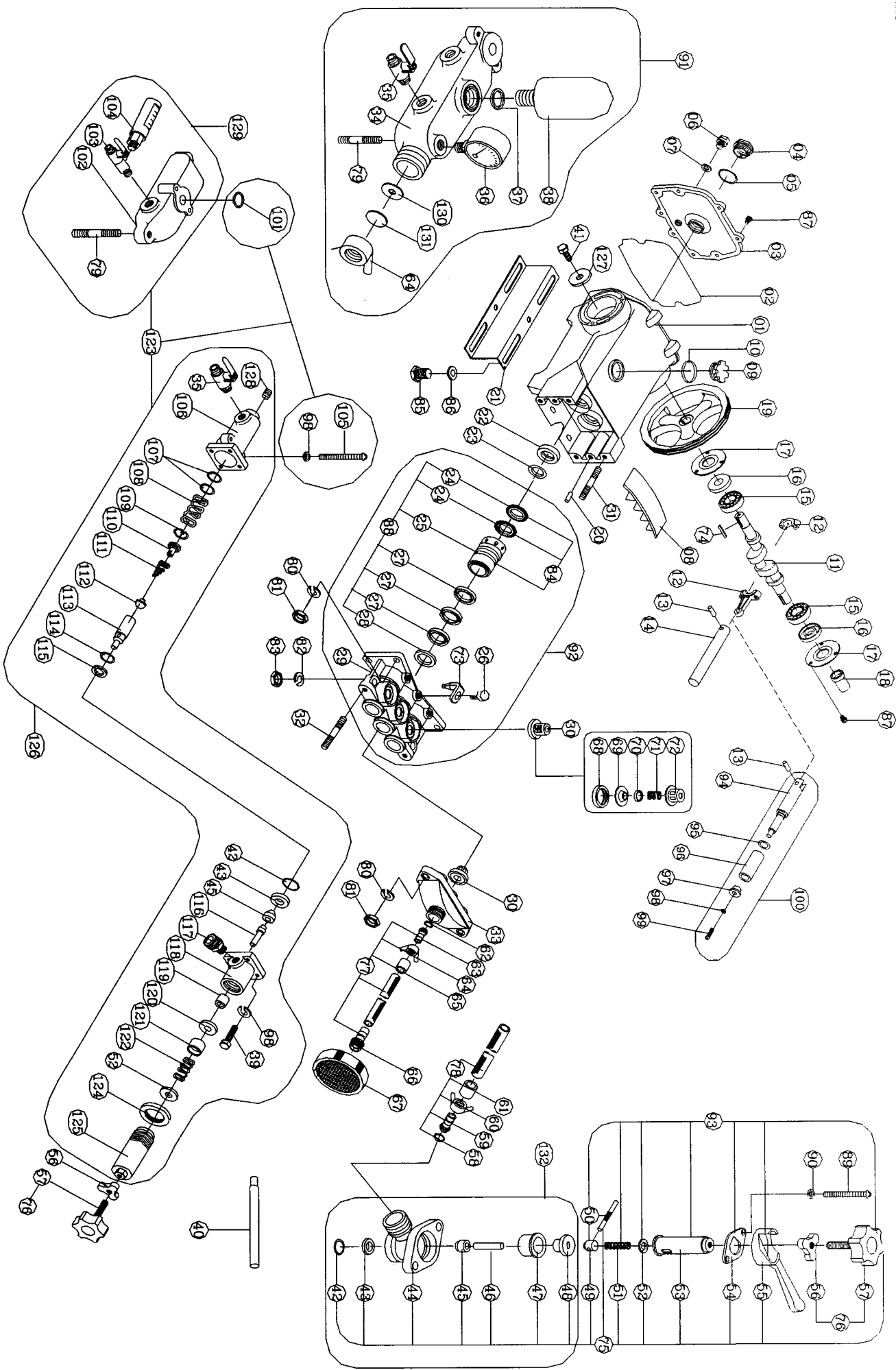


Diagram of LS-534/534C



Models No.					Models No.					
PARTS NO	PARTS NAME	Q'TY	LTEM	PARTS NO	PARTS NAME	Q'TY	LTEM	PARTS NO	PARTS NAME	Q'TY
10	34-001	1	35	22-051	BALL-COCK	2	70	30-042	STOPPER	6
01	34-001	1	35	22-051	BALL-COCK	2	70	30-042	STOPPER	6
02	34-002	1	36	22-054B	PRESSURE GAUGE	1	71	30-044	VALVE SPRING	6
03	34-003	1	37	22-052	RING, AIR CHAMBER	1	72	30-043	SPRING BOX	6
04	22-004	1	38	30-053	AIR CHAMBER	1	73	524-038	WEAR RING WASHER	3
05	22-005	1	40	546-057	ADJUSTING SPANNER	1	74	LU-0904100	KEY 5*5*25L	1
06	22-006	1	41	LU-0909402	SCREW 5/16x5/8	1	75	522-4129	SAFETY VALVE ASSY	1
07	22-007	1	42	22-059	VALVE SEAT RING	1	76	22-4123	FLY NUT & REGULATING SCREW	1
08	30-009	1	43	22-060	VALVE SEAT	1	77	30-4117	SUCTION HOSE ASSY	1
09	22-010A	1	44	522-063	OVERFLOW BODY	1	78	22-4119	OVERFLOW HOSE ASSY	1
10	22-004A	1	45	24-061A	VALVE	1	79	LU-0900204	M10x75L BOLT	2
11	30-020A	1	46	22-061B	VALVE BAR	1	80	LU-0908300	SPRING, WASHER	6
12	30-021	3	47	22-058	WATER SEAL CUP	1	81	LU-0908900	NUT M8	6
13	30-022	3	48	22-062	BOX WATER SEAL	1	82	LU-0908400	WASHER M10	2
14	534-023	3	49	22-067	UNDER METAL	1	83	LU-0904600	NUT	2
15	30-024	2	50	22-068	PIN	1	84	534-4330A	RING BOX ASSY	3
16	30-025A	2	51	22-069A	SPRING	1	85	LU-0900700	SCREW 8M*16L	4
17	22-026C	2	52	22-070	UPPER METAL	1	86	LU-0903200	WASHER M8 5/16*18	4
18	22-027A	1	53	22-065	SPRING BOX	1	87	LU-0901500	SPRING1/4*10L	14
19	34-028	1	54	22-064	SPRING BOX SEAT	1	88	534-4331	RING BOX ASSY	3
20	30-022	2	55	22-066	LEVER	1	89	LU-0902201	1/4"X2" L SCREW	2
21	34-012	2	56	22-071	FLY NUT	1	90	LU-0903500	SCREW 8M*16L	2
22	30-030	3	57	22-072	ADJUSTING SCREW	1	91	530-4208A	DISCHARGE METAL ASSY	1
23	30-031	3	58	22-080	PACKING	1	92	534-4107	CYLINDER ASSY	1
24	34-35+36	6	59	22-081	CORE COUPLING	1	93	22-4127B	SPRING TUBE ASSY	1
25	534-33+33	3	60	22-082	WING NUT	1	94	524-023C	PLUNGER ROD	3
26	524-039	3	61	22-084	BRASS CUP	1	95	27-078	O-RING 16*2(NBR)	3
27	30-035	9	62	30-090	PACKING	1	96	534-023A	CERAMIC BUSH	3
28	30-036	3	63	30-091	CORE COUPLING	1	97	534-023B	WASHER	3
29	533-037	1	64	30-092	WING NUT	2	98	LU-0908300	M8 SPRING WASHER	3
30	30-4109	6	65	30-094	BRASS CUP	1	99	LU-0908000	SPRING M8*16L	3
31	LU-090520	4	66	30-095	CORE STRAINER	1	100	534-4230	CERAMIC PLUNGER	3
32	LU-090530	2	67	22-096	STRAINER ASSY	1	127	LU-0903201	WASHER M8 5/16*30	1
33	530-045	1	68	30-040	VALVE SEAL	6	130	30-073	WASHER M8 5/16*30	1
34	530-050	1	69	30-041	VALVE SEAT	6	131	30-074	SCREW	1
							132	22-4127A		1