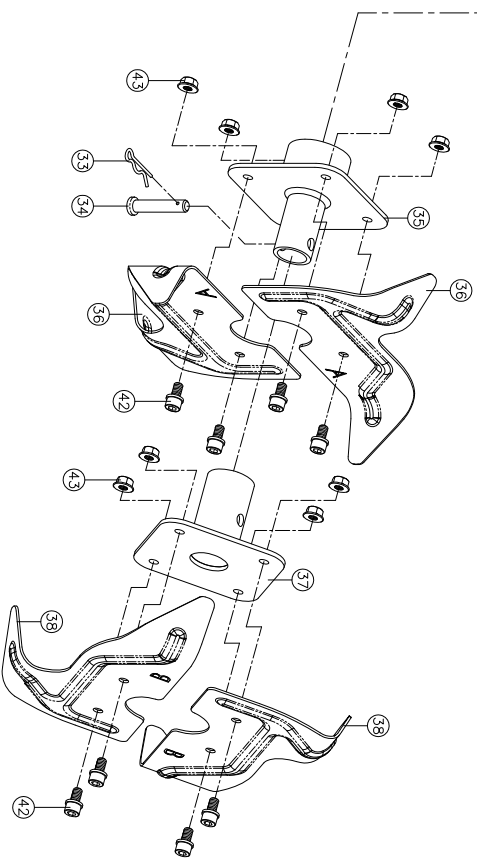
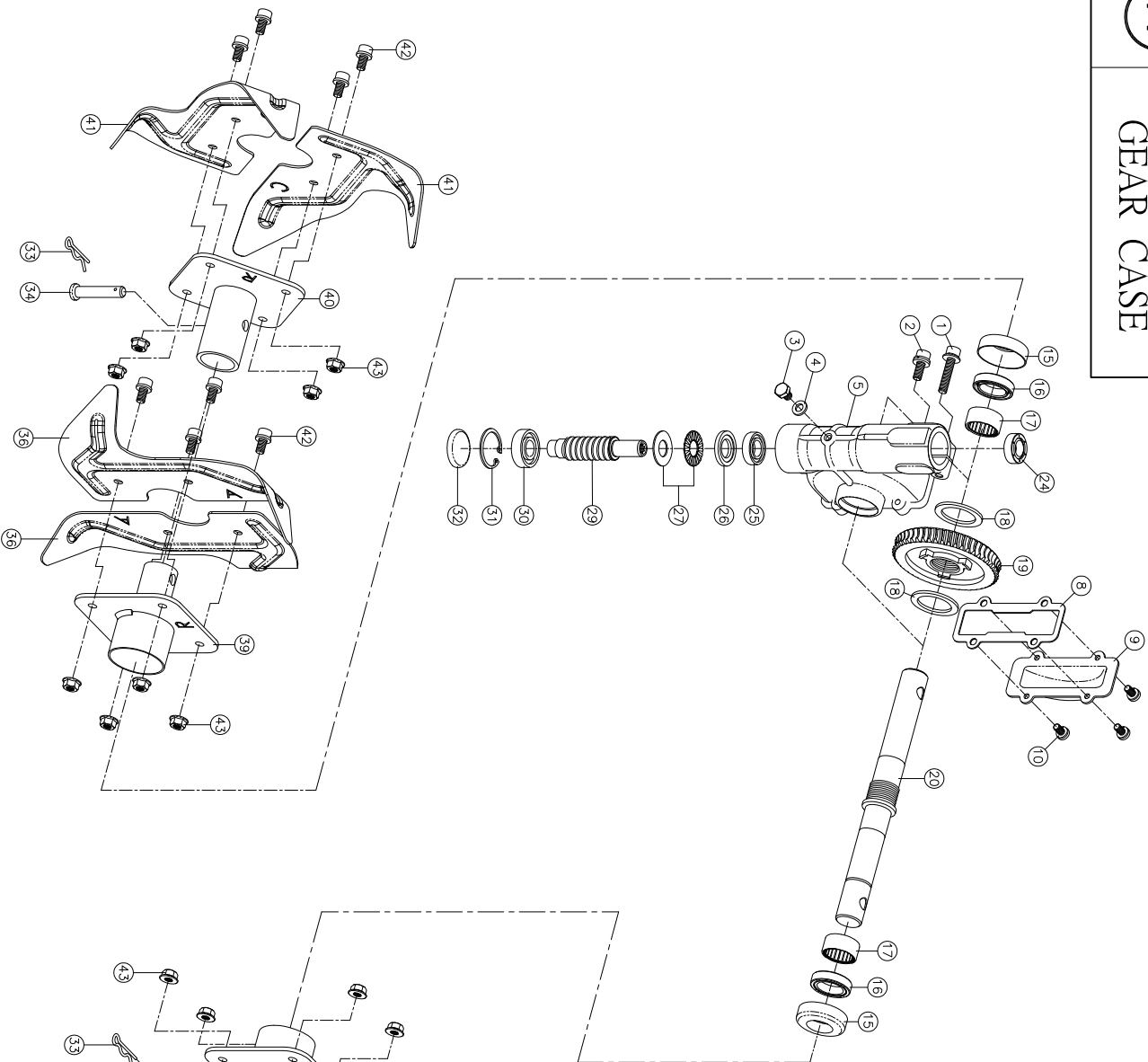


A

BCA00-025
GEAR CASE



NO	ITEM NO.	PARTS NAME	QTY	NO	ITEM NO.	PARTS NAME	QTY
27	BCA27-025	THRUST NEEDLE + WASHER 1226	1	1	XAW630SPWS	BOLT, M6*30	1
29	BCA29-025	SHAFT, WORM	1	2	XAW616SPWS	BOLT, M6*16	1
30	Z6001ZZ	BEARING, BALL,6001ZZ	1	3	XGW68	BOLT, M6*8	1
31	R-28	RING, STOP, IN, C-28	1	4	BG08-1605	GASKET, DRAIN	1
32	BCA32-025	CUTTER HOLDER CAP.	1	5	DCA05-025NC	CASE, GEAR	1
33	X-PIN-12MM	BLADE PIN 12	2	8	BCA08-025	GASKET, GEAR CASE COVER.	1
34	X-PIN-0840	PIN, LOCK	2	9	BCA09-025	GEAR CASE	1
35	DCA38L1-025	TINE HOLDER -L, INNER	1	10	XGW510SPWS	BOLT, M5*10	4
36	DCA3738-025	TINE, INNER	4	15	BCA15-025	COVER WINDING PROTECTION	2
37	DCA38L2-025	TINE HOLDER -L, OUT	1	16	BCA16-20307	SEAL, OIL #DS20307	2
38	DCA38-025	TINE, OUT -L	2	17	BCA17-2012	BEARING, NEEDLE, 2026	2
39	DCA37R1-025	TINE HOLDER -R, INNER	1	18	BCA18-025	WASHER, THRUST	2
40	DCA37R2-025	TINE HOLDER -R, OUT	1	19	BCA19-025	GEAR, WHEEL	1
41	DCA37-025	TINE, OUT -R	2	20	BCA20-025	SHAFT, DRIVE	1
42	XAA612	SOCKET BOLT, M6*12	16	24	BCA24-12227	SEAL, OIL #DS12227	1
43	XHB-6	FLANGE NUT, M6	16	25	Z6901ZZ	BEARING, BALL,6901ZZ	1
				26	BCA26-500	WASHER, STEP	1